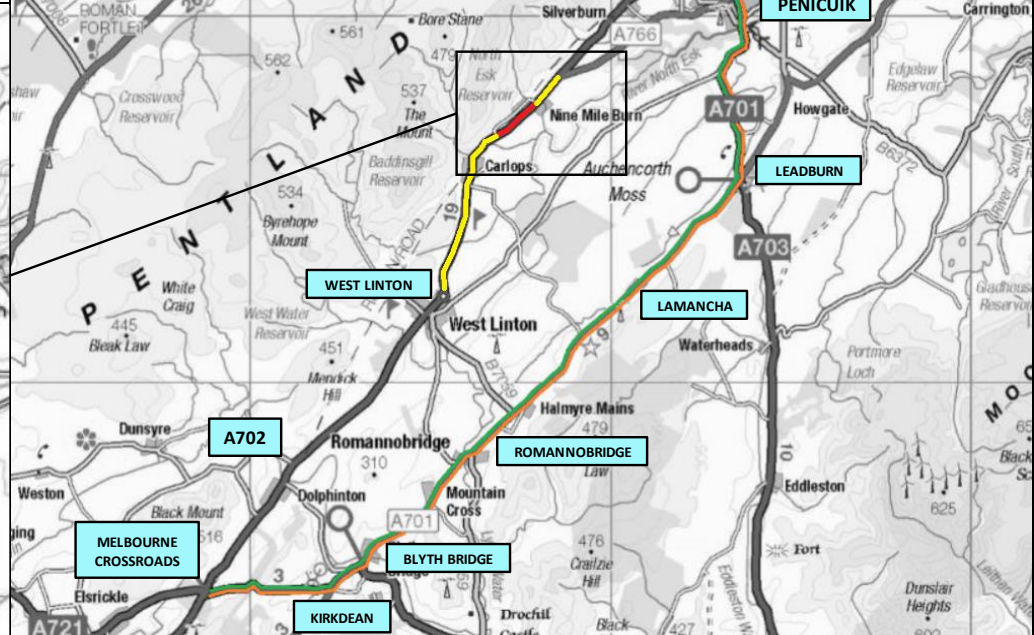
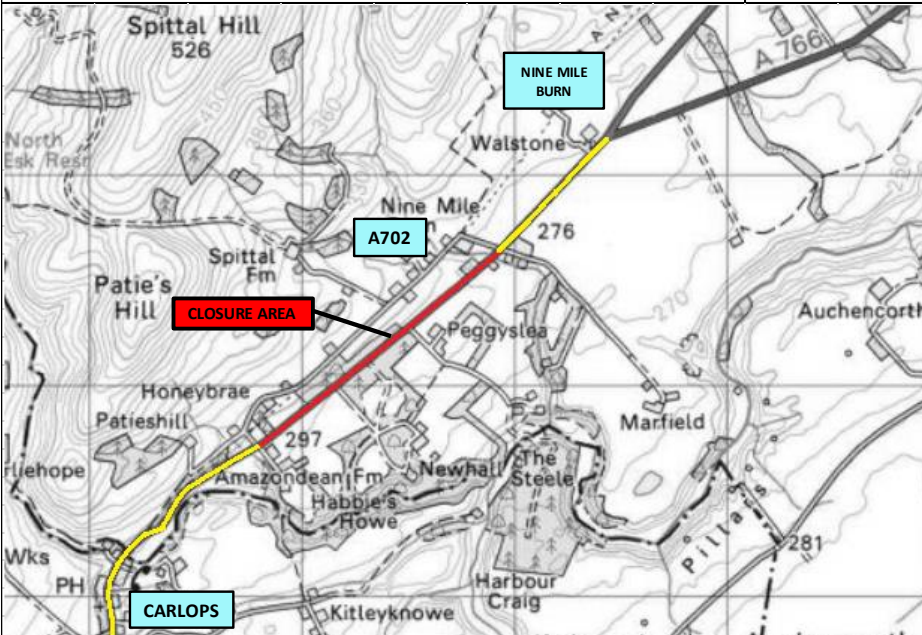


**KEY:**

- Closure Area
- Local Access Only
- Northbound Diversion
- Southbound Diversion

Drawing Number: 21/NSE/0103/004 - 004

Project: A702 Newhall Estate to A766 Jct Carriageway Resurfacing

Notes: A702 Road Closure  
Diversion Route

Diversion Journey Time	Diversion Journey Distance
Total: Approx. 40 Mins	Total: 33km
Additional: Approx. 15 Mins	Additional: 4km

Title: Diversion Route Sheet 1 of 1			
Rev	Date	Checked	



Status: For Information	Rev: A		
Drawing No: 21/NSE/0103/004 - 004	Scale: NTS	Date: 16/03/21	
Designed: AW	Drawn: AW	Checked: KA	Approved: KA